

Strategy 2025-2028

Vision

A strong and supportive community where people can access flexible and inclusive mental health, substance use health, and developmental services that grow and change with their needs.

Mission

Work with people to reach their wellness goals by offering accessible, culturally responsive, and innovative mental health services that strengthen our community.



EIDAR

We will embed Equity, Inclusion, Diversity, and Anti-Racism (EIDAR) principles across all aspects of our work.

Strategic Directions

Reduce Barriers

We're making it easier for people to access care by:



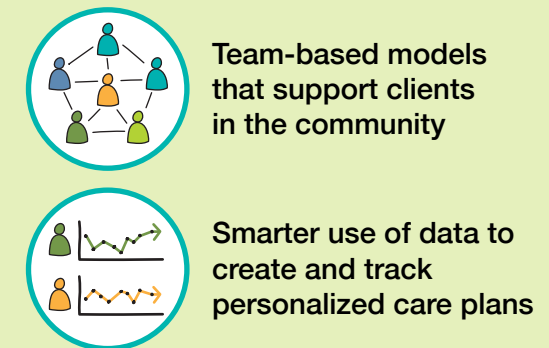
Meet the Needs of our Changing Population

To better serve our evolving community, we will:



Innovate Service Delivery

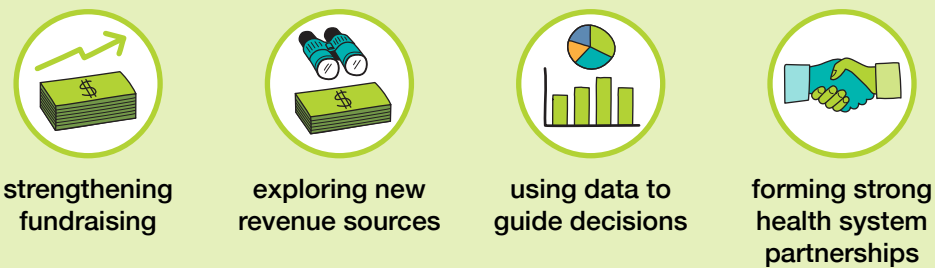
We are enhancing how we deliver care to help people stay well and avoid hospital visits. This includes:



Strategic Enablers

Sustainable Resource Environment

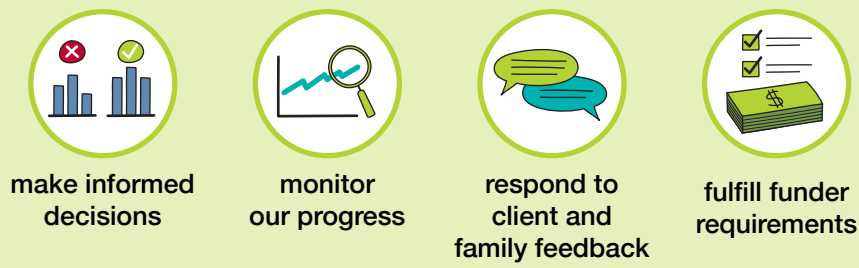
We're building a sustainable future by:



We're also committed to creating a great workplace and adopting environmentally friendly practices.

Data Driven Decision-Making

We will leverage data to:



Collaborative Partnerships

We're strengthening connections between primary care, hospitals, and community services to design more coordinated, client-centered care.

