

Examples of how an IGSW can assist you:

- Support you to get to your primary care doctor or specialist appointment
- Support you to get to the Pharmacy for a medication review
- Support you to attend a day program to ensure you are comfortable attending alone
- Support you with attending a dining, exercise or other social program
- Accompany you to see various Retirement homes as you choose the one best suited to your needs
- Link you with community programs, i.e. transportation, meals, social programs
- Assist you to meet your goals
- Plan ahead with you so that you are well prepared for when you no longer require our help

www.cmhaww.ca

Waterloo-Wellington IGSW Lead
c/o Canadian Mental Health Association
Waterloo Wellington
234 St. Patrick St. E.
Fergus, ON N1M 1M6
Phone: 1-844-264-2993 Ext. 7030

IGSW Kitchener/Waterloo
c/o Canadian Mental Health Association
Waterloo Wellington
1 Blue Springs, Suite 100
Waterloo, ON N2J 4M1
Phone: 1-844-264-2993

IGSW Cambridge
c/o Canadian Mental Health Association
Waterloo Wellington
Service housed within:
Community Support Connections
– *Meals on Wheels and More*
887 Langs Dr, Unit 4A
Cambridge, ON N3H 5K4
Phone: 519-772-8787

IGSW Guelph/Wellington
c/o Canadian Mental Health Association
Waterloo Wellington
Service housed within:
St. Joseph's Health Centre Guelph
Out N' About Program
69 Huron St.
Guelph, ON N1E 5L3
Phone: 519-824-6000

Service housed within:
Drop-in Centre Guelph
23 Gordon St.
Guelph, ON N1H 4G9
Phone: 519-822-1100



CMHA WW is grateful for the funding it receives from its provincial and local partners.

IGSW

THE RIGHT SUPPORT AT THE RIGHT TIME

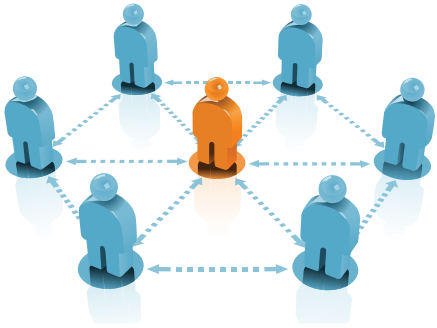


INTENSIVE GERIATRIC SERVICE WORKER

Intensive Geriatric Service Worker - IGSW

Home from Hospital...

Following discharge from the Hospital or Emergency Department, an IGSW visits you at home to review your Care Plan and to ensure that identified needs are met.



From the Community...

As an extension of the Specialized Geriatric Services in the community, an IGSW provides follow-up and encouragement to link to supports in the community.

IGSW Key Roles...

- “Walk with” you as you access services in the community after you are discharged from the hospital.
- We work closely with primary care, specialty care, community support services and the Community Care Access Centre (CCAC) as partners in your care.
- If an older adult is unsure about accessing supports, an IGSW can devote time to explain service options and be present when visits occur.

Referrals...

Referrals are usually made through the Geriatric Emergency Management (GEM) Nurse in the hospital Emergency Department, the Advanced Practice Nurse in the hospital, or Specialized Geriatric Services.

We value your privacy...

We only collect information that will help our team provide you with the best possible care. We follow the guidelines in the Canadian Standards Association Privacy Code and the Canadian Law.

Read the Canadian Mental Health Association Privacy Policy at www.cmhaww.ca/privacy or ask IGSW for a copy. Please call us if you have any questions.



HEALTHY

HAPPY

SAFE